

HW2A SST

Height: 23.8" (60.5cm) Width: 7.1" (18.0cm) Depth: 15.1" (38.4cm)

- 2gal (7.57L) of hot water in a space-saving machine just 7.1" (18.03cm) wide to fit any counter
- Includes drip tray
- High quality, easy-to-clean stainless steel exterior and tank for a long, dependable life
- Fresh, hot water is always available since the HW2 is plumbed to your water line



Agency:



Specifications

Product #: 02500.0002

Temp. Setting: 200°F (93.333°C)

Water Access: Plumbed

Finish: Stainless

Faucet: Upper

Additional Features

Capacity at 60° F

Electrical & Capacity

Volts*	Amps	Watts	Cord Attached	Plug Type	8oz cups/hr 236ml cups/hr	Input H ₂ O Temp.	Phase	# Wires plus Ground	Hertz
220-240	7.3-7.9	1600-1900	Yes	EURO 16A	-	60°F (15.5°C)	1	2	50/60

*When a BUNN is machine rated 120/208-240V, 120/208V or 120/240V, the higher voltage is the supply voltage needed to power the machine. The 120V is there to supply power to some components rated 120V in the machine, but it is not the supply voltage and would not power the machine if the machine is marked with the before mentioned ratings.

Plumbing Requirements

PSI	kPa	Fitting Supplied	Water Flow Required (GPM)
20-90	138-621	1/4" Male Flare Fitting	-

CAD Drawings

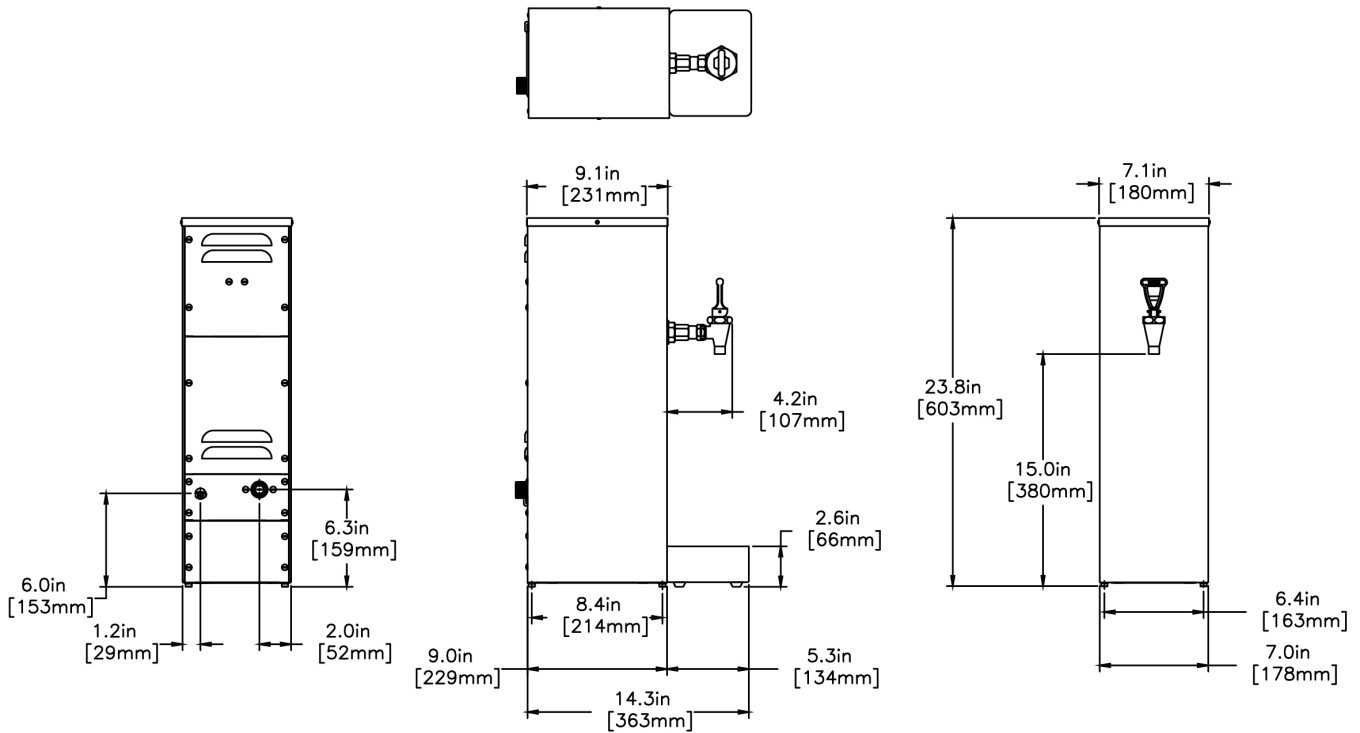
2D	Revit	KLC
●		

WARNING:



BUNN® reserves the right to change specifications and product design without notice. Such revisions do not entitle the buyer to corresponding changes, improvements, additions or replacements for previously purchased equipment. For most current specifications and other info visit bunn.com.

Last Updated:
10/18/2022



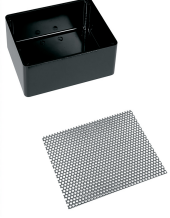
Unit			Shipping					
	Height	Width	Depth	Height	Width	Depth	Weight	Volume
English	23.8 in.	7.1 in.	15.1 in.	32.3 in.	10.9 in.	16.5 in.	20.050 lbs	3.349 ft ³
Metric	60.5 cm	18.0 cm	38.4 cm	81.9 cm	27.6 cm	41.9 cm	9.095 kgs	0.095 m ³



BUNN® reserves the right to change specifications and product design without notice. Such revisions do not entitle the buyer to corresponding changes, improvements, additions or replacements for previously purchased equipment. For most current specifications and other info visit bunn.com.

Last Updated:
10/18/2022

Related Products & Accessories:HW2A SST(02500.0002)



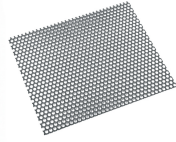
DRIP TRAY KIT (2.5"HT-
HW2)

Product #: 02497.0000



DRIP TRAY

Product #: 02545.0000



COVER, DRIP TRAY-
PERFORATED

Product #: 02546.0000



WATER FILTER
SYSTEM,EQ-17-TL

Product #: 30200.1000



WATER FILTER,IN LINE
ED-17-TL

Product #: 30201.1001



SYSTEM, WEQ-10(1.5)5L

Product #: 56000.0024



CARTRIDGE, WEQ-10
(1.5)5L

Product #: 56000.0121



CARTRIDGE, WEQ-10.3
(1.67)5L

Product #: 56000.0137



BUNN® reserves the right to change specifications and product design without notice. Such revisions do not entitle the buyer to corresponding changes, improvements, additions or replacements for previously purchased equipment. For most current specifications and other info visit bunn.com.

Last Updated:
10/18/2022

Serving & Holding Options: HW2A SST(02500.0002)

Serving and Holding selections are currently unavailable. Please contact your sales representative to find out more information.



BUNN® reserves the right to change specifications and product design without notice. Such revisions do not entitle the buyer to corresponding changes, improvements, additions or replacements for previously purchased equipment. For most current specifications and other info visit bunn.com.

Last Updated:
10/18/2022